

10-19-1988

Banner News

Angie Brelsford

Dawn Ellis

Kriss Philips

Tracey Herrick

Marilyn Jepson

See next page for additional authors

Follow this and additional works at: http://openspace.dmacc.edu/banner_news

Recommended Citation

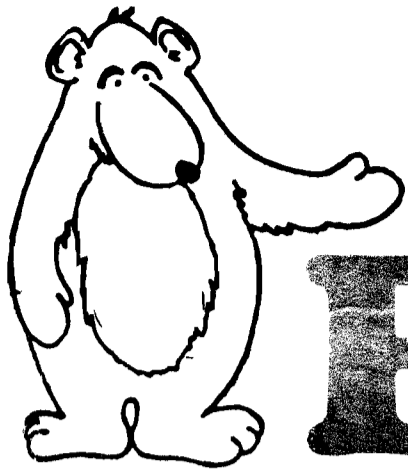
Brelsford, Angie; Ellis, Dawn; Philips, Kriss; Herrick, Tracey; Jepson, Marilyn; Smith, Jayne; and Miller, Lisa, "Banner News" (1988).
Banner News. 407.

http://openspace.dmacc.edu/banner_news/407

This Book is brought to you for free and open access by the Student Work at Open SPACE @ DMACC. It has been accepted for inclusion in Banner News by an authorized administrator of Open SPACE @ DMACC. For more information, please contact rsfunke@dmacc.edu.

Authors

Angie Brelsford, Dawn Ellis, Kriss Philips, Tracey Herrick, Marilyn Jepson, Jayne Smith, and Lisa Miller



The Bear Facts

Volume XVII Issue 2

Des Moines Area Community College, Boone Campus

Oct. 19, 1988

Teacher killed in accident

by ANGIE BRELSFORD
Staff Writer

Nancy L. Handley, of Jefferson, a Boone Campus nursing instructor, was killed in a two-car accident in heavy rain Wednesday, Sept. 28, 1988, south of Jefferson.

Handley, 50, was on her way home from a class at Drake University, where she was working on her master's degree in nursing.

The accident occurred at the intersection of Highway 4 and County Road E63 south of Jefferson.

Loren James Roiger, of Carroll, struck the left front portion of Handley's car after apparently failing to stop at a stop sign, according to officials. Handley's vehicle struck an REC light pole and both vehicles ended up in the northeast ditch.

Dr. Robert Burke, Greene County medical examiner, pronounced Handley dead at the scene.

Roiger was taken by ambulance to Greene County Medical Center where he was in satisfactory condition at press-time.

Jefferson Fire Department with the Jaws of Life and Greene County Medical Services assisted at the scene. The Greene County sheriff's office is still investigating the accident.

Both drivers were wearing seatbelts.

An obituary appears inside this issue of *The Bear Facts*.

REZOOMERS meet Oct. 20

The Boone Campus REZOOMERS will meet Thursday, Oct. 20 from 11:30 a.m. to 1 p.m. in the Library Conference Room 131.

Sunny Powers, guest speaker, will talk about test anxiety.

You're invited to brown bag it or bring along some lunch from The Student Center. You may stay as long as your schedule permits.

REZOOMERS is an informal group for all adult students who have returned to school after some years away from an academic setting.

For more information, contact Maggie Stone in the Displaced Homemakers Center.



Here is the cast for the fall production, "Nurse Jane Goes to Hawaii." Seated in front, from left to right, Jodi Mentzer, Jeff Wilkening and Kelly Dunphy. Back row, left to right, Mary Rhodd, Paul Nelson, Sean Santi, and Tami Porter. See story for details.

-Photo by
Travis
Patterson.

Make plans now, attend 'Nurse Jane Goes to Hawaii'

by DAWN ELLIS
Staff Writer

Does a storyline about a married couple, with both the husband and wife having an extramarital affair bringing about a child from each fling, sound interesting to you?

No, this is not your favorite soap opera; it's the story behind the Boone Campus fall play, "Nurse Jane Goes to Hawaii," by Allan Stratton.

An announcement concerning ticket sales will be made this week prior to the performance dates which are Friday, Oct. 21

and Saturday, Oct. 22, at 7:30 p.m. in the auditorium.

Those attending the play will be in for a special treat, as it is a dessert theater, meaning pie, coffee, and punch will be served after the production. All of this is included in the ticket price of \$4 for the general public and \$2 for DMACC students.

"This is going to be a good show," says Kay Mueller, director.

"I have the best group of actors who know a lot about getting a production together," she adds.

Cast members include Tami Porter as Vivien, Mary Rhodd as Betty, Jeff Wilkening as Bill, Paul Nelson as Peter, Sean Santi as Edgar, Jodi Mentzer as Doris, and Kelly Dunphy as Peggy.

Rehearsals have been under way since tryouts were held Sept. 7-8.

All DMACC faculty, staff and students are urged to attend this performance in support of all the long hours of hard work and effort put forth by Mueller and her Boone Campus thespians!

Peer tutoring program gone

by ANGIE BRELSFORD
Staff Writer

"Peer tutoring is a demand, but there are no funds for it."

That's what Sunny Powers, administrator of the peer tutoring program, says about the program which is no longer available for most Boone Campus students.

Peer tutoring was a system where a student getting below a C in a specific class could get help or tutoring from a peer with permission of the instructor. The tutoring was paid for by a fund through the Ankeny Campus. Funds were cut off abruptly this past summer.

However, students in vocational programs, such as nursing, can still get tutoring.

Options for students needing help in general subjects are now quite slim. The Learning Center has taken up some of the slack, but it is not enough, according to Powers. She suggests that teachers find work-study students who are qualified to hold help sessions.

Work-study students must meet the same requirements as tutors did in the peer tutoring program. Students qualify by having received an A or B in the subject area and by maintaining a C average in current course work.

Peer tutors are paid \$3.50 an hour. A vocational student can have as many hours of tutoring per week as credits offered by the class. Work-study students receive \$4 an hour, to help out in other general, non-vocational classes.

Students seem to like individual tutoring because it is convenient, and some students and tutors form a friendship.

For more information about getting a tutor for a class you are having problems with, contact the instructor of the class or Powers in The Learning Center.

Midterms next week

Students are reminded that midterm is Tuesday, Oct. 25.

Good luck on your midterm exams!

COMMENTARY

Yer momma didn't tell ya...

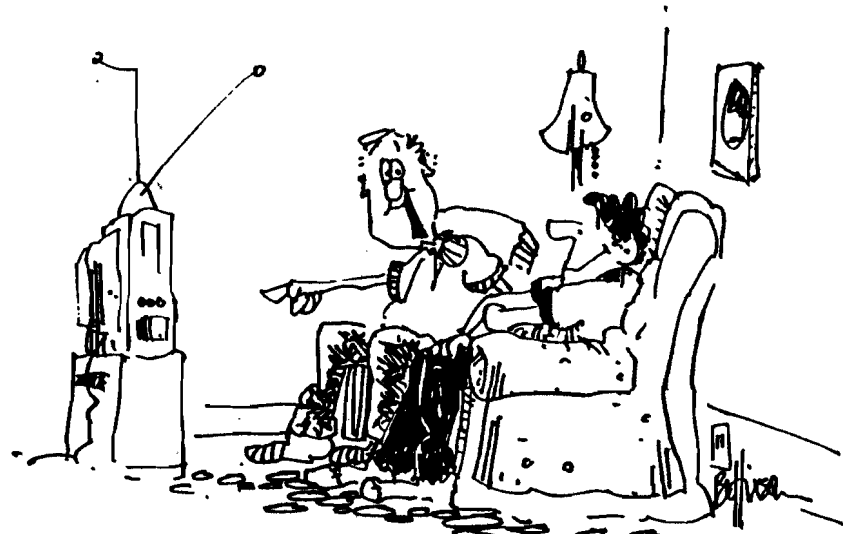
bk-hixson



LATE NIGHT WITH DAVID LETTERMAN WOULD CONFLICT WITH YOUR 7 AM ECON. CLASS

not required for graduation

b.k. hixson



A DUB NAMED SPUDS SURROUNDED WITH BABES? MTV? MAX HEADROOM? THIS IS GREAT! IN THE 60S STUDENTS HAD TO RELY ON DRUGS TO HALLUCINATE.

Who is your choice for president?

by ANGIE BRELSFORD
Staff Writer

With Election Day less than a month away, many voters are ready to head for the polls. Some have strong opinions about their presidential choice. Others are still undecided about the George Bush and Michael Dukakis tickets.

Many Boone Campus students will be first-time voters Nov. 8, while most of the adult students have voted before.

The Bear Facts asked a sampling of Boone Campus students, "Who are you voting for and why?"

Here are their responses:

Barb Rose: Undecided. Both have good qualities and yet both have certain drawbacks.

Cindy Mitchell: Dukakis. Dukakis' views are more like mine.

Amy Bittle: Undecided.

Gina Gilliam: Dukakis, because he's a Democrat! It is time to invest the United States' money on something worthwhile, not weapons!

Kaylynne Hoppe: Dukakis. I don't trust Bush!

Angie Trotter: Undecided.

Dawn Anderson: Dukakis. I'm a Democrat, and I agree with Dukakis' views. I don't want the United States to spend any more money on nuclear weapons!

Kimberly Kesselring: Bush, because I feel he might be able to change.

Karon Gardner: Dukakis. He

seems more in tune with the younger generation.

Julie Cunningham: Undecided.

Anne Minear: Dukakis. Let's see if the Democrats can do better!

Gloria Renz: Dukakis. I am a die-hard Democrat. I am not very enthused about Dukakis, but when I look at the alternative, he looks better and better.

Patty Groves: Dukakis. I'm tired of Reaganomics.

Tim Winter: Undecided. I'll wait until after the vice presidential debate.

Jane Crosman: Bush. I don't like Dukakis!

Roger Swanson: Undecided. George is not necessarily trustworthy. I do not know much about Mike.

Paula Tabor: Undecided.

Matt Donovan: Dukakis. Rock us, Dukakis!

Darla Carr: Undecided. I need to hear about real issues.

Anne Penn: Undecided. I'm going to see if either of them ever deals with the true issues.

Kris Eochliman: Bush. Dukakis switches bases too much. Besides, he is as big a wimp as Carter.

Comments by the Dean

by KRISS PHILIPS

From my perspective, the Boone Campus, Des Moines Area Community College, had the "most successful and confusion free" school opening in recent memory.

The Boone Campus students and employees have demonstrated a very willing and cooperative attitude which has created an atmosphere conducive for quality education to thrive on the Boone Campus.

We are currently serving a record 799 students in the arts and science and career educa-

tion programs on the Boone Campus. These students have come to us from all corners of the world. I am confident we will successfully help our students obtain the necessary quality education and training which will enhance their future careers and/or education.

Due to the conscientious efforts of each of you, Boone Campus continues to maintain a vital educational program of which Boone County and central Iowa can be proud.

Have a good year!

Journalists find jobs

Approximately half of the 1987 graduates of U.S. journalism and mass communications programs found jobs with media-related companies within six months of graduation. About 12% of the graduates were unemployed, the same as the past four years.

Ohio State University's school of journalism, which conducted the project with a grant

from the Dow Jones Newspaper Fund, estimates 26,350 students received bachelor's degrees from the nation's 331 journalism or mass communications programs last May or June.

The percentage of female graduates from these programs remained stable at 66%, as has the proportion of minorities (10%).

The number of students who looked for full-time jobs with newspapers declined from 1986 to 1987. That is due in part because the number of mass communication graduates who majored in traditional news editorial programs declined from 22% in 1986 to 18% in 1987, and because the number of grads who had worked for a college newspaper dropped 12% from 1986 to 1987.

As a result, the number of graduates who went to work for a daily or weekly newspaper or with a wire service dropped four percentage points from 1986 to 1987.

COUPON

The Palace

BEAUTY and TANNING SALON

Now is your chance to SAVE

Bring in the coupon for

\$2⁰⁰ OFF
a haircut

\$5⁰⁰ OFF
a perm

\$1⁰⁰ OFF
a tanning session



M-F: 8:30 to 6
Sat: 8 to 3
Walkins welcome!

714 ARDEN STREET
BOONE, IOWA 50036
TELEPHONE: 432-3375

Hy-Vee

Lots of Little Differences
— You'll Like!

931 8th Street - Boone
432-6065

CAMPUS LIFE

Student Spotlight Heinz urges students to study

by DAWN ELLIS
Staff Writer

"Don't skip out, but go to class and spend time in the library," says John Heinz, the subject of this month's Student Spotlight.

John was born in Milwaukee, Wis., April 16, 1970, the son of Sue and Carl Heinz. He graduated from Algoma High School, Algoma, Wis. in 1988 and is in his first year of college.

His classes at DMACC - Boone Campus include sports officiating, economics, business law, writing and speech. His major is business/finance, and after his schooling he hopes to open his own business.

In his free time, John enjoys playing baseball, dancing, yachting, doing his homework, eating and shopping for clothes.

Dizzy girls and people sniffing are a couple of his biggest pet peeves.

John says his favorite thing about DMACC - Boone Campus is the extra help students can get from teachers, where they can't get that individual help at larger schools.

Good luck at DMACC and with your future endeavors, John!



JOHN HEINZ

Criner finds he has 'competitive' team

by DAWN ELLIS
Staff Writer

Dick Criner, head coach of the Lady Bears at DMACC - Boone Campus, is beginning his seventh year as coach and along with that, his expectations of a team that is even better than last year's.

With three returning starters and five freshmen, all very capable of gaining a starting position, he feels the team will be very competitive.

Returning starters include Marilyn Cason, 5' 9", averaging 22 points per game last year; DeAnn Clark, 5' 11", proving her abilities last year by stacking up quite a few blocked shots and rebounds per game; and Shari Mosman, 5' 9", averaging 12 points per game.

New faces to the team include

Yolanda Lewis, 5' 11"; Kim Cunningham, 6' 1"; Michelle Bunger, 5' 4"; Sara Dashty, 5' 3"; Jennifer Holverstein, 5' 8"; Cori Allen, 5' 7"; and Susan Roth.

Criner said all the new players are very good shooters and any of them could receive a starting position.

Scoring more than 60 points per game and having a quicker, better defense are goals Criner would like his team to meet during the season.

Marshalltown and Waldorf are expected to be the toughest and most competitive teams the girls will meet this season, according to Criner.

We certainly wish Coach Criner and the Lady Bears the best of luck for the upcoming season!

Calendar of Events

by TRACEY HERRICK
Staff Writer

WEDNESDAY, OCT. 19—

A Drake representative will be on campus from 10 a.m. to 1 p.m.

THURSDAY, OCT. 20—

Sunny Powers will speak on test anxiety at the REZOOMERS meeting. Bring a brown bag lunch to Room 131 from 11:30 a.m. to 1 p.m.

FRI.-SAT., OCT. 21-22—

The fall play, "Nurse Jane Goes to Hawaii," will be performed in the DMACC auditorium at 7:30 p.m. Dessert will follow each performance.

SUNDAY, OCT. 30—

Deadline for Soroptomist Club \$400 training award. Get details in the office.

TUESDAY, NOV. 8—
Election Day.

WEDNESDAY, NOV. 23—
Last day to drop a class.

THURS.-FRI., NOV. 24-25—
Thanksgiving holiday; offices closed. Happy Thanksgiving!

FRIDAY, NOV. 25—
Deadline for Elk National Scholarship for students in a voc/tech career. Get details in the office.

TUESDAY, DEC. 20—
Last day of fall semester.

WEDNESDAY, DEC. 21 -
TUESDAY, JAN. 10—
Christmas break.

WEDNESDAY, JAN. 11—
Spring semester begins.

Farm course offered

Des Moines Area Community College's Holst Farm Management Institute, housed at Boone Campus, is offering a short course to women in the area agricultural community.

The course is entitled "Accounting for Farm Women" and will focus on the application of accounting principles to the farm business, creation and analysis of financial statements, and family financial planning.

It is designed to be a beginner-level course as well as a refresher course for more experienced students. Women of all ages are encouraged to attend.

The class will be held four consecutive Thursdays beginning Oct. 27 and will meet from 6:30 to 9:30 p.m., Room 115, Boone Campus. Cost is \$25 per person.

To register for course number FMGT 510 BA, please call 432-7203 or toll free 1-800-362-1850 any weekday between 9 a.m. and 4 p.m. For more information, call Gary Stasko at Boone Campus at 432-7203, or stop by his office in Room 201.

Student poets enter contest

A trip to Hawaii for two is the new grand prize in the American Poetry Association's latest poetry contest. There is also a \$1,000 first prize. In all, 152 poets will win \$11,000 worth of prizes.

Contest entry is free.

"Students have been winners in all our contests," said Robert Nelson, publisher for the Association.

"I urge students to enter now. Later, they may be too

busy with exams," he said.

Poets may send up to five poems, no more than 20 lines each, with name and address on each page to American Poetry Association, Dept. CN-74, 250 A Potrero Street, P.O. Box 1803, Santa Cruz, CA 95061.

Poems are judged on originality and sincerity. Every poem is also considered for publication.

In the last six years, the American Poetry Association has sponsored 27 contests and awarded \$101,000 to 2,700 winning poets.

Poems postmarked by Dec. 31 are eligible to win. Prizes will be awarded by Feb. 28, 1989.

Ross'

ANNIVERSARY SALE

now in progress!

20% - 30% OFF

selected fashions

OPEN
M-S 9-6
Thurs.
till 9

Downtown Boone

Challenge tests available

by **ANGIE BRELSFORD**
Staff Writer

Challenge test exams, tests that allow students to pass out of a class, are increasingly attracting many students. Boone Campus offers such exams which allow a student to receive credit for courses in which they take the challenge test and pass successfully.

Sunny Powers, director of The Learning Center and chair of the communications department, approves of challenge testing.

"If students have paid tuition and feel they know the material, I urge them to give it a shot," said Powers.

More students are doing so. Approximately 20 students have taken challenge tests this semester and 50% have been successful, according to Powers.

"The tests save time and effort," said Powers.

Typing I, business/financial math, shorthand and Composition I are the courses frequently challenged.

A specific challenge test can be attempted only once. Testing must be completed by the designated drop date. If a student passes the test, a "T" will be entered on the student's transcript and is not used when computing grade point averages.

Even if students are not registered in a class, they can still challenge. Only one-half of the tuition is charged and the money is not refundable.

"Each department sets scoring levels," said Powers.

If a student is interested, he or she has to complete a form. A list of courses that can be challenged and forms are available in The Learning Center.

Scenes from

"Nurse Jane Goes to Hawaii"



Above, Jeff Wilkening as Bill (in disguise) during rehearsal for the Boone Campus fall play, "Nurse Jane Goes to Hawaii." Performances are Oct. 21-22 in the DMACC auditorium at 7:30 p.m. both evenings. Upper right, Tami Porter as Vivian gets help with an ashtray from Paul Nelson as Peter. Right, Paul Nelson as Peter gives Mary Rhodd as Betty a little foot massage during a current rehearsal.



Foundation dinner

by **ANGIE BRELSFORD**
Staff Writer

The Des Moines Area Community College - Boone Campus Foundation will host its annual gourmet dinner Wednesday, Nov. 16 at the Boone Country Club.

DMACC board members are selling tickets to the dinner, which cost \$30 each. Proceeds are donated to a scholarship fund for Boone Campus students.

It is hoped 125 tickets will be sold. (The number of scholarships awarded will depend on the profits from the dinner.)

The exquisite gourmet dinner will be prepared by Chef Anderson and Chef Dowie. Details on the exact menu have not yet been finalized.

Many are urged to enjoy a gourmet dinner in pleasant surroundings and donate to the Boone Campus Foundation. The Foundation hopes to gain exposure from the community with this event.

If you are interested, contact the office of Dean Kriss Philips at 432-7203.

Look What COUNTRY KITCHEN Offers You!

- Full Menu
- Fast Service
- Breakfast anytime
- Weekend Buffet (all you can eat)
- Friday and Saturday late night breakfast buffet

OPEN 1703
24  **South**
Hours **Story**

FAREWAY STORES

INCORPORATED
ECONOMICAL FOOD DISTRIBUTION
EST. 1957 FAREWAY BROS. INC.

**National Brands at
Everyday Low Prices**

628 Story — 432-7519

**Hawkeye
Federal
Savings Bank**

Complete
**BANKING SERVICES
DRIVE-UP FACILITIES
24-HOUR AUTOMATIC
TELLER MACHINE**

MAIN BANK HOURS:

Monday - Friday 9:00 a.m. - 4:30 p.m.
Thursday 9:00 a.m. - 6:00 p.m.

"A TRADITION YOU CAN BANK ON!"

8th and Arden / Boone

432-1220

Member FSLIC



CLUBS

SAB results are in

Ten Boone Campus students were recently elected in the Student Action Board elections held Sept. 30.

Members of the board for the current school year are: Scott Stumbo, Lisa Miller, Pat Mattingly, Amy Warnock, Mishelle Michel, Chris Silberhorn, Toby Kruse, Chris Heikes, Melissa Donelson, and Toby Anderson.

SAB has a budget of approximately \$15,000 this year. Supported (at least in part) by the budget are athletics, *The Bear Facts*, campus recreation, cheerleading, drama, honor society, intramurals, maintenance of The Campus Center, Nursing Students United, Phi Beta Lambda, recreation club, Rotaract activities and student government.

Each SAB member must maintain a 2.0 cumulative GPA and have a minimum of nine credit hours.

An organizational meeting has been held, but as of presstime, a president had not been named.

Some of the new members were to have attended a leadership conference Oct. 14-15, again, after presstime.

Watch for details in the next *The Bear Facts* regarding SAB actions and planned student activities.



Student Action Board

The Boone Campus Student Action Board was elected Sept. 28-30 on campus. Members are, in front, from left: Toby Anderson, Chris Heikes, Melissa Donelson and Toby Kruse (president). In back: Amy

Warnock, Chris Silberhorn, Pat Mattingly, Scott Stumbo, Mishelle Michel and Lisa Miller.

-Photo by Travis Patterson

Rotaract Club plans activities

by MARILYN JEPSON

Rotaract, a Boone Campus community service club, held its annual membership drive Wednesday-Thursday, Sept. 28-29 at Boone Campus.

Rosie Moorman, Rotaract president, said approximately 15 students signed up for membership in the club the first day of the drive.

Moorman, a sophomore nursing major at Boone Campus, said if students didn't sign up during the drive, there is still time to do so.

"Membership into Rotaract is always open," she said.

Moorman said she really wanted to encourage students to find time to attend Rotaract.

The club meets twice a month during the school day. The time of the club meetings is flexible in order to work around the majority of the students' schedules, Moorman said.

The club's first project will be its yearly food drive.

Within the next few weeks, boxes will be placed around campus so that students, faculty and staff may bring canned goods for the needy.

The purpose of the drive is to help needy families in the area during the holidays.

"I would really like people to get involved in Rotaract. It's fun! It's interacting! And we're there to help because we care," she said.

Over 80 join nursing club

by ANGIE BRELSFORD
Staff Writer

Nursing Students United is getting its new year under way in fine fashion, according to Pat Triska, president.

NSU has held two meetings with an overwhelming number of 80 members attending.

The first meeting was held Sept. 20. Members approved a motion for joining first and second year nursing students into one group.

They also voted to carry over officers elected last year. Officers are Pat Triska, president; Dena Sprecher, vice president; Connie Ware, secretary; and Diana Rasmussen, treasurer.

Many representatives were also elected. Faculty advisors are Connie Booth and Lou Blanchfield.

In its second meeting Tuesday, Oct. 4, NSU scheduled a bake and craft sale for Monday, Oct. 17. Proceeds will be donated to the scholarship fund in memory of Nancy Handley, a Boone Campus nursing instructor who was killed in an automobile accident Sept. 28.

Members also discussed other things they would like to accomplish for the new year.

NSU meetings are now held in the nursing room, but the increasing number of members may force them to move to the auditorium.

The club conducts meetings as needed.

Gillespie

Pontiac-Olds-GMC

1600 S. Marshall St. - Boone - 432-5221

The DMACC Drama Department
proudly presents . . .

"Nurse Jane Goes to Hawaii"

A comedy by Allan Stratton
— Directed by Kay Mueller —

**Friday, Oct. 21 and
Saturday, Oct. 22**

7:30 p.m. each evening in the auditorium

Enjoy this night out at
Boone Campus' first ever

DESSERT THEATRE!

Pie, coffee and punch served
after each performance

\$4 for general public

\$2 for DMACC students

Purchase your tickets on campus or
call 432-7203 for more information



SPORTS

Hughes looking to successful season

by MARILYN JEPSON
Staff Writer

Larry Hughes is starting his 15th season as basketball coach of the Boone Campus Bears, and he is optimistic despite the return of only three veterans from last year's squad which won the western division of the Iowa Junior College Conference and finished 11-18.

Hughes, who coached high school basketball at Stanton for two years and East Greene for five years before coming to Boone Campus, said, "I haven't looked forward to a season as much as I do this one. It's really going to be fun!"

His optimism stems from his team's prospects of success for the upcoming season. According to Hughes, this year's team has many strong points including good ball handling skills, quickness, and agility.

"We like to run and score every chance we get," he said. The team's attributes will help strengthen this year's offensive attack.

Returning to the lineup this season are Jim Heese, Harlan; Derrick Oglesby, Milwaukee, Wis.; and Chris Heikes, Adel-DeSoto.

Both Heese and Oglesby saw a considerable amount of action as freshmen, Hughes said.

"I'm looking to these two to be leaders in practice and at game time," he said.

Heese is a 6' 3" forward.

"He's a very aggressive player who knows his limitations. He has a good head for the game and is a team player all the way," Hughes said.

Oglesby, at 6', is expected to help out in one of the guard positions.

"He's the best defensive player we had last year. We're looking forward to the leader-

ship he can provide the team this year. He's an extremely quick player, very fast in pushing the ball down the floor. He makes things happen," Hughes said.

Heikes, the other returning veteran, did not have much high school experience when he joined the Bears last season, according to Hughes.

"Because of his lack of experience on the high school level, Heikes didn't play a lot. We hope to see more of him this year," he said.

Hughes has nine new players joining his squad this season including Dana Eggleston, Dy-sart-Geneseo; Joe Ballard, Robichaud High School, and Barry Hardy, Inkster High School, both of Inkster, Mich.; Jeff Hughes, Boone; Chad Ira, Des Moines East; Van Gross, Gulf Port High, Gulf Port, Miss.; Nathan Moen, Pella; Kenny Jones, Romulus High School, Romulus, Mich.; and Sean Watkins, Morgan Park High School, Chicago, Ill.

Eggleston, Hughes, Gross, Jones and Watkins, along with veteran Oglesby, will all be competing for the guard spots.

Hughes feels the new guard prospects all have something to contribute to the success of this year's team.

Eggleston, at 5' 11", is a good outside shooter; Hughes, 6' 1", is quick, runs well and a good ball handler; and 6' Gross is also a good ball handler and has a nice soft jump shot.

(Jeff Hughes happens to be Coach Hughes' son. The coach said he has been looking forward to coaching his son and will try his hardest to separate being Jeff's dad from being Jeff's coach!)

Hughes compared Jones, at 5' 11", to Oglesby.



Adding experience to the Boone Bears' lineup this season are veterans, from left: Chris Heikes and Jim Heese. Not pictured is Derrick Oglesby.

"Jones pushes the ball up court and makes the running game happen. He drives well, too," said the veteran coach.

Watkins, 6', is also very capable at the guard position, said Hughes.

"These guards will make us fast and allow us to play more pressure defense this year," added Hughes.

Hughes will be looking to Chad Ira to play the center position. Ira, 6' 6" and over 200 lbs., is the biggest player for the Bears.

"He's physically built and with his Metro experience, he'll give us what we need from a physical center," said Hughes.

Moen, Ballard and Hardy will be vying for the forward positions, along with veterans Heese and Heikes.

Moen, 6' 2", played inside as a high school player because he was a physical ballplayer, according to Hughes.

"He will probably have to play small forward at Boone because of our type of play, but we will look for him to give us some physical aspects," said Hughes.

Ballard and Hardy both transferred to Boone this fall and, therefore, will have to sit out the first semester. Ballard is a transfer from Lansing Junior College in Michigan, and Hardy comes to Boone from Trenton Junior College in Missouri.

Hughes said both Ballard, 6' 5", and Hardy, 6' 4", are quick, agile team players with a lot to offer.

"Ballard can shoot inside and from the perimeter, besides providing good rebounding strength. He's a good jumper and plays around the rim. We need this," Hughes said.

"Hardy is probably the best jumper I've ever coached. He will be exciting to watch. He will make the fast break work," continued Hughes.

"Both players will add to the front line when they join the team next semester," he said.

Hughes sees the lack of depth in the front line as a weakness early in the season until all the players become eligible to play.

The team began conditioning Sept. 26, running and lifting weights. Every player had to run a mile under six minutes before they could begin regular practice which started Oct. 10.

In looking at the competition, Hughes said, "It's difficult to say what will happen because junior college ball is unique. It changes so much (with players being there one year and not the next), but competition is always great."

The Bears kick off their season Nov. 10-11 in the Clinton Tournament at Clinton. Game times will be announced later.

Hughes also encouraged the student body to get involved.

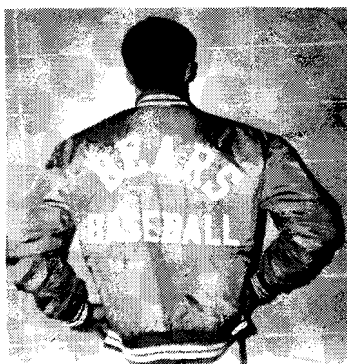
"Junior college basketball is exciting. It's a fast game. If the student body comes, they are going to have a fun time," said Hughes.

"It's going to be a fun season," he added.

**SUPPORT
THE
BEARS!**

**Special lettering
on jackets
available.**

Talk to us
about team
prices.
STOP IN SOON!



★ 808 Seventh Street

★ Boone, Iowa 50036

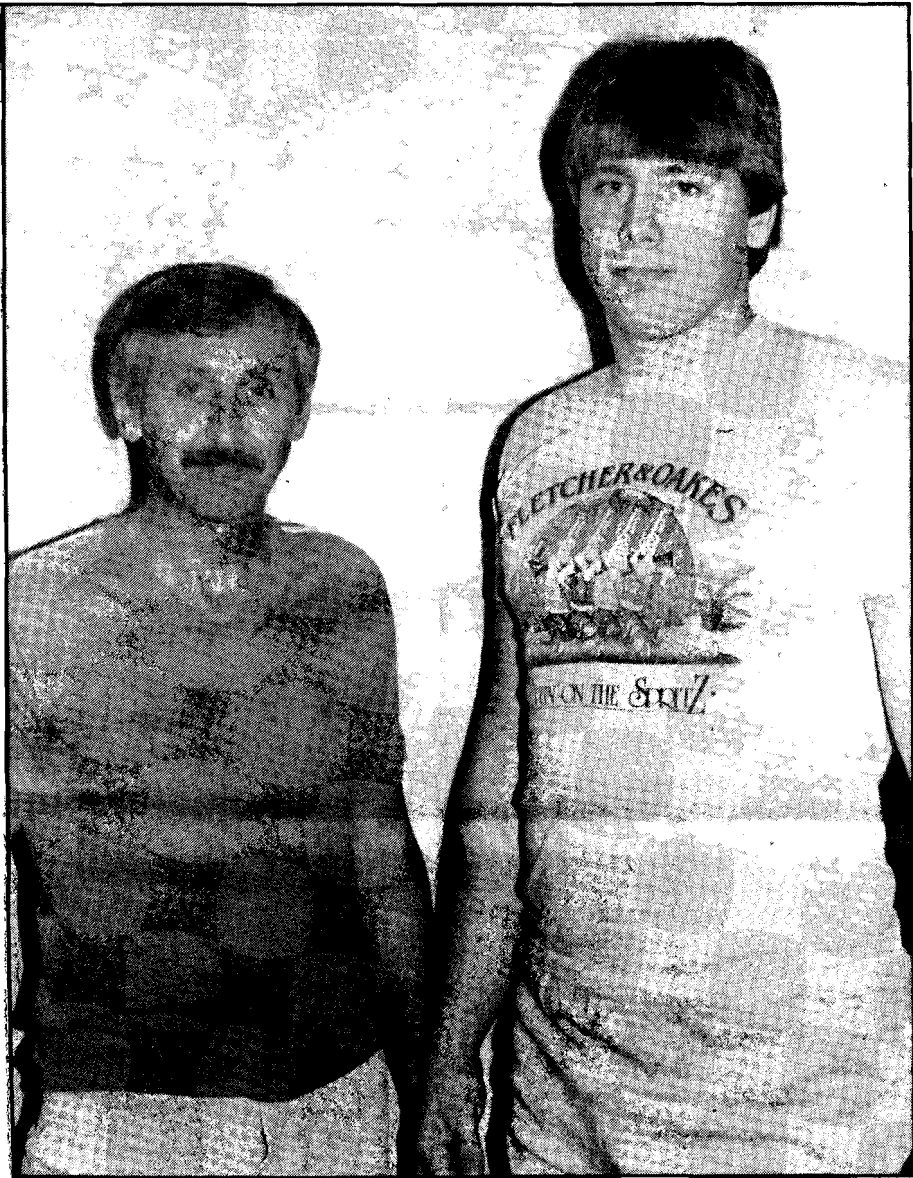
★ Telephone: 515-432-8393

Allstar
SPORTING GOODS

★ ★ ★ ★ Tom and Linda Nutt, Owners ★ ★ ★ ★

DMACC - Boone Campus 1988 - 1989 Men's Basketball Schedule

Date	Opponent	Site	Time
Nov. 11 (F)	Clinton Tournament	Clinton	TBA
Nov. 12 (S)	Clinton Tournament	Clinton	TBA
Nov. 14 (M)	Marshalltown	Away	8:00
Nov. 16 (W)	NIACC	Home	8:00
Nov. 19 (S)	Simpson J.V.	Away	8:00
Nov. 21 (M)	Iowa Central	Away	7:30
Nov. 30 (W)	Kirkwood	Home	8:00
Dec. 3 (S)	Ellsworth	Home	8:00
Dec. 7 (W)	Waldorf	Away	8:00
Dec. 10 (S)	Marshalltown	Home	8:00
Dec. 12 (M)	Council Bluffs	Away	7:30



Coach Larry Hughes (left) will be looking to new recruit, Chad Ira, 6' 6", to fill the center spot on the Bears' squad. Ira comes to the Bears with experience from the Des Moines Metro league.



New recruits, from left, Van Gross, Dana Eggleston, Sean Watkins, Jeff Hughes, and Kenny Jones, along with veteran Derrick Oglesby (not pictured) will be competing for the guard positions on the Bears' squad.



Vying for the forward slots on the Bears' team will be, from left: Jim Heese, Joe Ballard, Barry Hardy and Chris Helkes. Not pictured is Nathan Moen.

**Spring Break
Tour Promoter-
Escort**

Energetic person, male or female, to take sign-ups for our FLORIDA and/or SOUTH PADRE tours. We furnish all materials for a successful promotion.

GOOD PAY AND FUN!

Call **CAMPUS
MARKETING** at
1-800-777-2270

D

**HUNTER'S 66
Convenience Store
and Car Wash
1616 S. Story St. - Boone
OPEN 24 HOURS**



THE BEAR FACTS is the official student publication of the Boone Campus of the Des Moines Area Community College. The staff welcomes suggestions and contributions, which should be submitted to the editor. The newspaper is published nine times a year and is distributed free to the students, staff and friends of the school.

REPORTERS: Angie Brelsford, Charlotte Brown, Dawn Ellis, Tracey Herrick, Marilyn Jepson, Lisa Miller and Travis Patterson.

PHOTOGRAPHERS: Travis Patterson.

ADVERTISING: Lisa Miller.

ADVISOR: Jill Burkhart

*BOONE CAMPUS, DMACC
1125 Hancock Drive
Boone, Iowa 50036*

Boone Campus Library offers you more than books

by JAYNE SMITH
Boone Campus Librarian

Welcome to the Boone Campus Library/Media Center!

The library is here for you to use. It is more than a storehouse for books; it is a resource center for a wide range of subjects. Whatever your information needs, the library staff is glad to help you in any way they can.

Staff

The library staff includes Jayne Smith, librarian; Louise Payton, library technician; and Dona Ryan, library clerk.

Library hours

Library hours are 7:30 a.m. to 8:30 p.m. Monday through Thursday, and 7:30 a.m. to 4 p.m. Friday.

During vacations and in-service days, the library hours are

posted in advance at the library entrance.

What we have

The Boone Campus Library has a collection of approximately 18,000 circulating and reference books, 110 periodical subscriptions, and a variety of audiovisual materials. These include filmstrips, videotapes, records, cassette tapes, slides, kits, and transparencies.

All materials (except periodicals) are listed in the library's card catalog.

Loan periods

Books in the general collection and pamphlets from the vertical file may be checked out for two weeks and renewed once for an additional two weeks.

Audiovisual materials and back issues of magazines and newspapers may be checked out

for two days and renewed once for an additional two days.

Reserve materials may be checked out for two hours. (Instructors may request other loan periods on materials for their classes.) Reserve materials may be checked out for overnight at 3 p.m. or later and are due by 9 a.m. the next school day.

Cassette tape players may be checked out overnight on the same basis as reserve materials.

Audiovisual materials requiring special equipment should be used in the library.

Reference materials are not circulated, but remain in the library at all times.

Returning materials

When you return books, use the book drop at the circulation desk during regular hours.

Another book drop is located in the hall outside the library for use when the library is closed.

Interlibrary loan

If books or articles are wanted and are not available in our library, they can be ordered

from other libraries.

Give the information about the item wanted (author, title, publisher, etc.) to the librarian. Most requests can be filled within two weeks. There is no charge for this service.

Listening/viewing area

The library is furnished with equipment for using audiovisual materials on an individual basis. You can get help with equipment from any library staff person.

Videotapes of some TV courses are available in the library during the term that course is offered. You may request the appropriate tape at the circulation desk and view it in the library conference room.

Typing area

The library has several typewriters which are available for use during all library hours. There is no cost for using these typewriters, but the library does not provide typing paper or other supplies.

Computer area

There are a few computers for

student and staff use in the library. These computers cannot be reserved, but rather, are on a first-come, first-served basis.

Photocopier

A photocopier for copies on either letter or legal-sized paper can be used at a cost of 10¢ per page.

Transparencies can also be made on the copier at a cost of 40¢ a sheet. Ask at the circulation desk for additional help and information.

Group study room

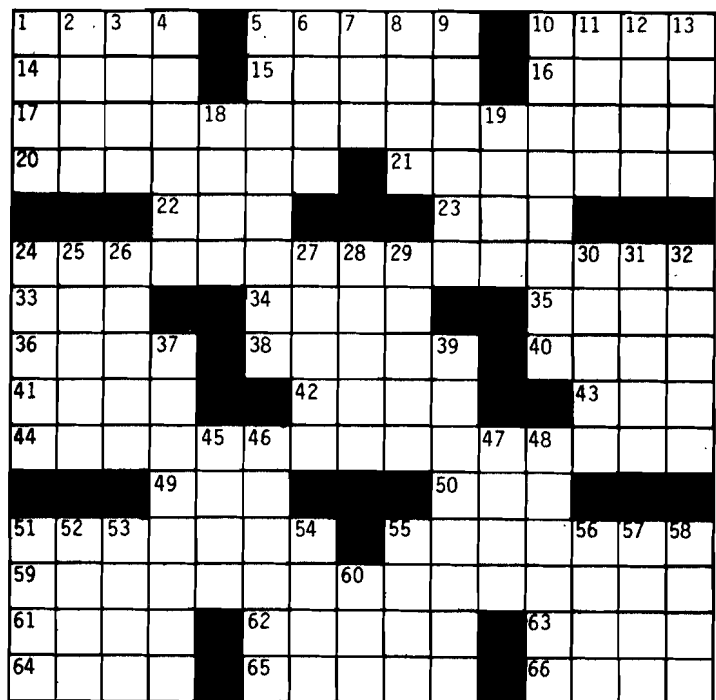
The library conference room is available for group use. This room may be reserved in advance. Contact a staff member for assistance.

Additional comments

Smith comments, "We hope that students will become steady users of the library. Pleasures related to library use are long-lasting and will continue and accumulate long after formal education is completed."

Welcome to DMACC's Boone Campus Library!!

collegiate crossword



© Edward Julius Collegiate CW83-31

ACROSS

- 1 Paleozoic, Mesozoic, etc.
- 5 Car accessory
- 10 Soviet news agency
- 14 Function
- 15 Parenthetical comment
- 16 Jai
- 17 Principle of economics (3 wds.)
- 20 Provide evidence
- 21 With 60-Down, house pet
- 22 — volta (once, in music)
- 23 Suffix for diction or honor
- 24 Promissory note, e.g. (2 wds.)
- 33 Ms. Gardner
- 34 Sea eagles
- 35 French resort
- 36 Poet Teasdale
- 38 Novelist Philip and actress Lillian
- 40 Type of restaurant, for short
- 41 Seed covering
- 42 — school
- 43 Was a candidate
- 44 EDP personnel (2 wds.)

- 49 Map abbreviation
- 50 Company bigwig (abbr.)
- 51 Alleviate
- 55 Chemical catalyst
- 59 EDP equipment (2 wds.)
- 61 Subject of the movie, "Them"
- 62 South American animal
- 63 Home
- 64 Nearly all
- 65 Like some breakfast foods
- 66 Mah-jongg piece

DOWN

- 1 Formerly, formerly
- 2 Debauchee
- 3 European range
- 4 Deviated
- 5 Traveler on foot
- 6 British phrase
- 7 Wrestling maneuver
- 8 Actor Byrnes, et al.
- 9 Phone again
- 10 1957 movie, "the Bachelor"
- 11 Winglike parts
- 12 — souci
- 13 Beef quantity

- 18 The bottom
- 19 O.K. Corral participant
- 24 Houses, in Hermosillo
- 25 Reproductive organ
- 26 1961 baseball MVP
- 27 Farmer's concern
- 28 Prefix for mural
- 29 Extremely pale
- 30 Seashore structures
- 31 Brilliance of success
- 32 Bridle attachment
- 37 Unselfish person
- 39 Astronaut
- 45 "L'—, c'est moi"
- 46 Prefix for maniac
- 47 China's "Great — forward"
- 48 Cultured milk
- 51 Economist Smith
- 52 —-Japanese War
- 53 Bilko and York (abbr.)
- 54 First name in jazz
- 55 Site of 1960 Olympics
- 56 Toilet case
- 57 Ms. Carter
- 58 Subject of Kilmer poem
- 60 See 21-Across

Upcoming Events for Soviet Union Year

by MARILYN JEPSON

DMACC campuses are celebrating Soviet Union Year throughout the 1988-89 school year in conjunction with Iowa being the first state to sign a "sister-state" agreement with the Soviet state of Stavropol.

Iowa Gov. Terry Branstad, on a visit to the Soviet Union, signed a sister-state agreement with the officials of Stavropol June 17, 1988.

Stavropol is the home of Soviet General Secretary Mikhail Gorbachev.

The sister-state agreement is expected to lead to continuing trade, education, athletic and cultural ties between Stavropol and Iowa, Branstad said in a June 18 article in *The Des Moines Register*.

Kriss Philips, dean, Boone Campus, said the DMACC Soviet Union Year Committee is hoping to give DMACC students a better understanding of Russian culture in correlation with the sister-state agreement signed by Branstad.

DMACC will be offering a series of monthly lectures along with a special focus week, April 3-7, on the USSR.

Soviet health practices

Presentations on health practices in the Soviet Union will be given on the Ankeny Campus Wednesday, Oct. 26.

Paul Mayes, biology instructor at Eastern Iowa Community College, will lecture on "Soviet Science and Technology" at 11:15 a.m. in the Maple Room at the Ankeny Campus.

In the afternoon, Dr. Rex Montgomery, professor at the College of Medicine at the University of Iowa, will address his audience on "Rural Health Care in the Soviet Union." The address will be given at 1:25 p.m. in the Ankeny Campus auditorium.

Agriculture and business

Agriculture and business will be the monthly topics discussed Wednesday, Nov. 16.

"Microcomputers and Their Use in the USSR" will be presented by Donley Moran, director of marketing at Cadco, Inc., Des Moines. His presentation will be given at 9:05 a.m. in the Ankeny Campus auditorium.

Moran's presentation will be followed by three presentations on "Conducting Business in the USSR."

Guest speakers for these presentations will be Ted Townsend, president, Townsend Engineering, Des Moines; Wayne Fox, chairman of the board, Triple F Products, Inc., Des Moines; and Herman Jensen, director of sales, Gomaco, Inc., Ida Grove.

Other planned activities

In March, Boone Campus will host a monthly presentation on sports.

Other spring activities include dissidents and minorities at the Urban Campus in January and music-art at the Ankeny Campus in February.

John Liepa, chairman of the DMACC Soviet Union Commit-

tee, said a Soviet Scholar will also be in residence at DMACC for one week each semester under the auspices of the Iowa Peace Institute.

The Soviet Scholar is sponsored by the Ankeny Campus Student Action Board.

Any faculty or staff member interested in obtaining the Scholar for classroom presentations should contact Ann Schodde (No. 6570) at the Ankeny Campus.

Climaxing Soviet Union Year will be Soviet Union Week, April 3-7. The week's activities will include lectures, visiting Soviets, museum and art displays, Russian food and much more.

All DMACC students, faculty and staff are invited to attend and enjoy the series of events throughout the 1988-89 school year, according to Liepa.

Philips also encouraged any Boone Campus students interested in serving on the Soviet Union Year Committee to contact him or Lee McNair, chair of the humanities department, Boone Campus. Philips and McNair are presently serving on the Soviet Union Year Committee.

Philips said involvement in Soviet Union Year is very timely with the international scene the way it is.

"It's all very exciting," Philips said.

Enter the DMACC writing contest

Works may be submitted for the annual DMACC writing contest beginning Monday, Oct. 3, according to Rick Chapman, communications/humanities, Ankeny Campus.

Papers will be accepted through Monday, Dec. 7, 1988.

Any DMACC student enrolled this fall may participate.

Awards

The awards include a tuition scholarship of \$250 for fall term, 1989, by the Ankeny Campus Student Action Board (the contest's chief sponsor).

Cash awards include \$100 for best story and \$50 for runner-up and \$100 for best poem and \$50 for runner-up.

"We hope that all students, those returning, as well as those graduating or transferring, will feel welcome to enter their work," Chapman said.

Publication

Award-winning manuscripts and those receiving honorable mention may be published in Expressions.

Judging

Judges from DMACC will evaluate the manuscripts and award the prizes. They and the coordinator reserve the right to determine if prizes will be awarded in all categories.

Entries will be judged anonymously, for each contestant's work will be number-coded during the evaluation process.

Please keep copies of your work. Entries will not be returned.

Manuscript Standards

Participants must submit at least three original manuscripts and may submit up to five. The purpose of this requirement is to select the best writers, not just the best works.

Although no thematic guidelines must be followed, manuscripts must take the form of poetry, short fiction or personal essay (narrative only). (For those writers most interested in publications, the shorter the work, especially fiction, the more likely its publication.)

Manuscripts must be typed (double-spaced) and accompanied by a single cover sheet including the titles of the pieces, the author's name, college program, home address and phone number and a signed statement as follows: "The following pieces of writing are solely my own work. I am currently a student at DMACC (if you're interested in the scholarship, add that you plan to be enrolled in fall, 1989). I do not object to the publication of my writing if it is properly acknowledged."

Title each piece, but leave your name off since each will receive your entrant number to ensure your anonymity.

Routing

Send your work to: DMACC Creative Writing Contest, Rick Chapman - Contest Coordinator, Humanities and Public Services Dept., Building 2 - Ankeny Campus, 2006 S. Ankeny Blvd., Ankeny, IA 50021.

More Information

If you need more information or have a question about the DMACC creative writing contest, see your composition instructor or Sunny Powers in The Learning Center.



For your Information

For your convenience, here is a listing of the Boone Campus faculty and their office numbers. You may want to clip this out and place it in your notebook!

Full-time faculty

Bill Alley, Room 122; Bill Berge, 125; Lou Blanchfield, 129; Connie Booth, 129; Vivian Brandmeyer, 212; Sandra Chacko, 221; Cindy Cory, 221; John Doran, 224.

Mary Jane Green, 213; Curt Hill, 224; Mel Holthus, 201; Brenda Hoshaw, 111; Larry Hughes, gym; Harold Johnson, 127; Bruce Kelly, 122.

Lee Robert McNair, 123; Kay Mueller, 111; Delores "Sunny" Powers, 105; Bill Ryan, 127; John Smith, 126; Gary Stasko, 201; Dr. Robert Taylor, 124; Nancy Woods, 224.

Part-time faculty

Loren Bawn, 136; Ivette Bender, 136; Janice Benson, 222; Kim Brogden, 136; Jill Burkhart, 210; Dick Criner, gym; Rebecca Diane, 136.

Michael Hanna, 106; Susan Hayes, 136; Rose Hubby, 136; Susan Joanning, 136; Marguerite Kelley, 136; Glen Kietzman, 136; Michael King, 136; J. Douglas Kirchner, 136.

James Loos, 116; Art Meyers, 136; Robert Person, 126; Linda Plueger, 201; Rhonda Rippey, 222; Jeanne Roth, 106; Joann Santage, 105; Jinny Silberhorn, 106.

Jayne Smith, 132; Candace Strawn, 136; John Strohl, 136; Sarah Tanner, 105; Barb Vaske, 123; Cecilia Garcia Wall, 136; Ken Walter, 201; Cathy Wetzler, 136.

Here's where your activity fees go

by LISA MILLER
Staff Writer

Did you ever wonder where your activity fees go?

Each year, the Boone Campus Student Action Board (SAB), in conjunction with its budget committee, recommends a budget for disbursement of student activity fees collected during the year.

For the 1988-89 school year, both part- and full-time students pay 95 cents per credit hour for activity fees, with a maximum of \$14.25 for 15 hours of credit, according to Chris Carney, business manager.

The fees are then used to help fund student activities, clubs, athletics, drama, *The Bear Facts*, and other areas.

Following is the activity fees budget for the fiscal year July 1, 1988 through June 30, 1989. The amounts given are approximations, as the amount collected may vary depending on spring semester's enrollment.

Campus Recreation/Intramurals	\$ 2,023.50
Clubs: Nursing Students United	505.87
Phi Beta Lambda	505.87
Recreation Club	505.87
Rotaract	252.73
Athletics	7,419.50
Student Action Board	3,709.75
Cheerleaders/Drill Team	337.25
<i>The Bear Facts</i>	674.50
Drama	843.12
Phi Theta Kappa/Honors Society	84.31
Total	\$16,862.50

Explanation of Accounts

The budgeted funds for Campus Recreation/Intramurals is available for purchase or replacement of supplies and equipment for recreation events.

Each club is awarded a sum of not more than 3% of the allocated budget per semester, intended to promote total student body oriented activities. Clubs are encouraged to represent the college in respective state and national organizations when possible.

Funds for intercollegiate athletics are administered by the athletic director. Funded by the athletic budget are men's and women's basketball, baseball, and softball. Charges to the budget include transportation, meals, lodging, equipment, officials, insurance, scholarships, advertising, recruitment, rent and postage. Athletics involve approximately 100 students who compete in nearly 130 contests annually.

The Student Action Board account is used for costs of activities sponsored by SAB. Special events usually include a fall get-together for new students to meet returning ones, a Christmas dance, a Homecoming dance and the annual pig roast.

Funds for the cheerleaders and drill team are administered by an advisor. Charges include transportation, equipment, recruitment, practice sessions and mini-workshops with the ISU Pep Council.

Allocation of funds for the student newspaper, *The Bear Facts*, covers most expenses for equipment, materials, typesetting and printing.

Drama budget expenditures include royalties, scripts, costume rental, properties and equipment replacement.

The honorary society charges are for honors pins and a recognition/initiation dinner for full-time students who have completed three semesters of college work with a GPA of 3.25 and 3.50 or higher.

SUPPORT THE BEARS

DUDS'nSUDS
Good clean fun!

Wash 60¢ - Dry 50¢
(40 min.)

DROP OFF LAUNDRY -	LOWEST PRICES IN TOWN!	ASK FOR DISCOUNT CARDS!
WE'LL DO ALL THE WORK!		Mail your packages via UPS, not an agent office.

8 a.m. to 9 p.m. — 7 DAYS A WEEK
Alco Mall — Boone — 432-1757

It's time to do a little Christmas shopping!

20% OFF

Sweatshirts
at the
BOONE CAMPUS BOOKSTORE

Also, check out our Halloween masks, now in stock!

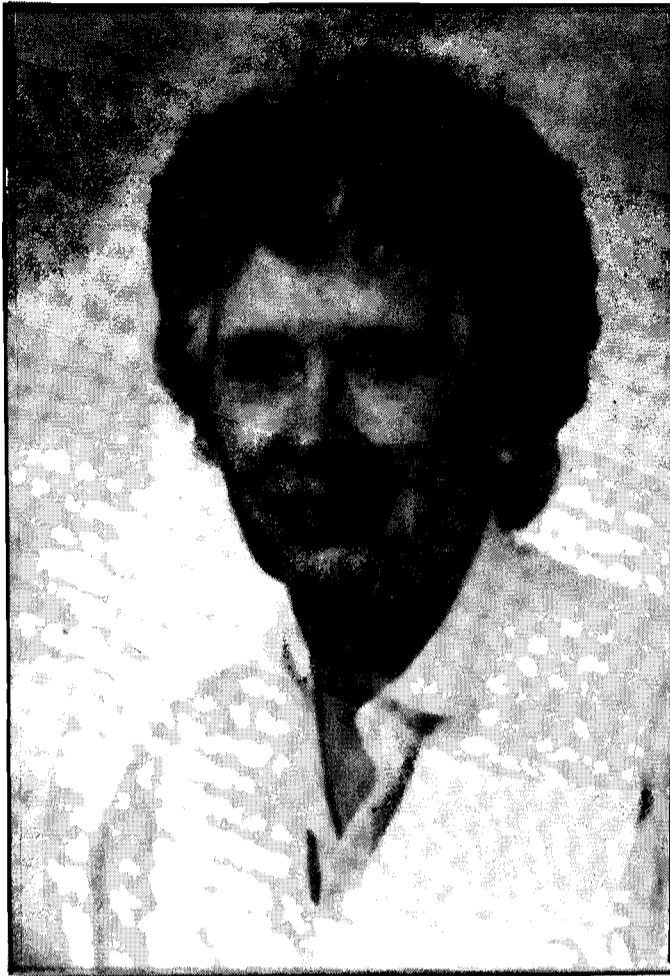
Hours: Monday - Friday, 8 a.m. to 4:30 p.m.

FREE CATALOG
of Government Books
Send for your copy today!

For a free copy of this catalog, write—

Free Catalog
P.O. Box 37000
Washington, DC 20013-7000

IN MEMORY OF NANCY L. HANDLEY



NANCY L. HANDLEY

Obituary

Services for Nancy L. Handley, 50, of Jefferson, were held at the First United Methodist Church in Jefferson Saturday, Oct. 1, 1988.

Mrs. Handley died Sept. 28 as the result of an automobile accident.

Survivors include her husband, Randall, of Jefferson, and three grown children.

Mrs. Handley was a nursing instructor at DMACC - Boone Campus. She was working on her master's degree in nursing at Drake University in Des Moines. She held a master's degree in education and was also working on her Ph.D. at Iowa State University, Ames.

Memorials have been organized for the Drake University Library Fund and the DMACC Nursing Faculty Association scholarship fund, which will be awarded yearly to an outstanding nursing student.

Nancy Handley, a Boone Campus nursing instructor, was involved in an automobile accident Sept. 28, 1988 which claimed her life.

But her memory will live on in the hearts of her many friends, students and colleagues here at Boone Campus. Following are some of the memories and reflections Nancy's friends will cherish for many years to come.

Joan von Grabau, head of the DMACC nursing program districtwide, had the following comments in a memo to Boone Campus faculty and staff.

"The nursing faculty and I have had the privilege of working with Nancy for a total of five years. Over these years, a strong bond of respect and appreciation grew for her many achievements and abilities.

"For those of you who were not as fortunate to work as closely with or know Nancy as well as those of us in the nursing department, I would like to share a few facets of her life with you.

"Nancy has been a lifelong learner. She graduated from Iowa Lutheran Hospital in 1959 and received her BSN from Grand View College in

1980. She continued her graduate education at the University of Iowa and attained a master's degree in education in 1986. In 1987, she enrolled at Drake University to pursue a master's degree in nursing while also taking course work at Iowa State University toward a Ph.D. in higher education.

"I first met Nancy in 1980 when she came to Des Moines Area Community College as a Grand View student to do an independent study project in nursing education under my direction. This was the beginning of a relationship which provided me the opportunity to work with one of the most dedicated, professional, knowledgeable and skilled nurses I have known in my career. In addition, she had a wealth of interpersonal relationship skills and a dry wit which gave her the ability to take human frailties in stride.

"Nancy was totally unselfish with her time and talents in all her endeavors in nursing practice and teaching. She loved nursing and dedicated her life to ensure professionalism in her chosen career. She believe in 'unity of purpose' between nursing practice and education

and worked as a staff nurse last summer at Mary Greeley Medical Center on one of their most acute units. The nursing staff on that unit has the highest regard for her nursing practice.

"Nancy's passing leaves a huge void in our department districtwide. However, the legacy she left us will always be remembered and cherished," von Grabau concluded.

Connie Booth, chair of the Boone Campus nursing department, said, "We will all miss Nancy and want to remember her dedication to excellence in nursing education and practice."

Boone Campus Dean Kriss Philips had these comments. "Nancy was a 'top-notch' professional employee in every way. She will be missed greatly by all."

Jerry Moscus, executive vice president for educational services for DMACC, added, "A very experienced, knowledgeable instructor, Nancy had nevertheless continued to pursue advanced nursing studies. She was an outstanding clinical instructor known for her hard work on behalf of students. Her loss is a severe blow to her students, to her colleagues on the Boone Campus, and to all of us at DMACC."

Colleagues remember Nancy Handley

Scholarship is set up

The Boone nursing faculty has established a memorial scholarship award in Nancy Handley's name.

A committee will be formed to outline criteria for awarding the scholarship, according to Connie Booth, Boone nursing chair.

"Preliminary ideas include awarding the scholarship to outstanding nursing students and/or to a nursing faculty member working toward a higher degree," Booth said.

Persons caring to contribute to the fund may send their donation to the nursing office at Boone Campus, or to Chris Carney in the main office through the DMACC Foundation.

A trust fund will be established at a local bank.

6-week summer session reviewed

by MARILYN JEPSON
Staff Writer

Students and instructors participating in the six-week session classes at Boone Campus last summer discovered that the experimental program offering entry-level courses had both its advantages and disadvantages.

Sunny Powers, chair of the Boone Campus communications department, said the program evolved after the Iowa State Legislature mandated that public schools in Iowa begin classes after Sept. 1. The new ruling pushed the end of the 1987-88 school year into June and prevented many graduating seniors from enrolling in DMACC's regularly scheduled summer courses which began May 24.

Last summer's six-week session enabled these high school seniors to take a summer semester of college courses.

The six-week session classes were offered from June 22 to Aug. 4.

Powers said students involved in the six-week session attended class every day, Monday through Friday, rather than on alternate days so they could complete the session at the same time as regularly held classes.

Boone Campus originally offered seven entry-level courses, but there was only enough student interest shown for two of these classes, English 118 (Composition II) and Speech 110 (fundamentals of speech).

Powers taught Composition II, and Kay Mueller, Boone Campus speech and drama instructor, taught the speech course.

Both instructors felt their students were confronted with similar problems during the session. Scheduling was probably the most common problem.

"Students had a hard time adjusting to all the additions to their schedules. With these classes meeting every day, all of their other activities had to be worked around this. For some, it meant changing their work schedules. It was an adjustment," Powers said.

Powers and Mueller agree that students had to learn to manage their time better. They said it seemed like there was always another speech or composition due because of the compact schedule.

Mueller said, "Students felt there was never any slack time. It was hard (for them) to keep up the pace."

Powers and Mueller said the scheduling affected them, too. Powers said she really had to work hard to keep ahead of her paperwork.

Mueller added it was also hard to stay on top of the grading.

The late start in itself created a drawback for the students, according to Powers.

"Six-week session students don't have a midterm exam. The regularly scheduled summer classes are getting their midterms as we are starting our session," she added.

Powers feels that midterms are important to the student for they need to know where they are standing in a class. It provides them with a guideline.

Powers and Mueller both felt that the program had definite advantages.

Meeting every day, Mueller felt her students got to know one another better and in a speech class, this had definite benefits.

"The students developed a camaraderie amongst themselves. They became very honest with one another in discussing their strengths and weaknesses (as speakers)," Mueller said.

Powers liked the continuity of the program.

"It keeps students writing and working every day. The teacher is able to give instant feedback. This continuity is good for both the student and the teacher," she said.

Powers would like to see the program run again even though there wasn't a lot of student participation last summer.

"I would like to see the program succeed because I think, for whatever reasons, there are some students who can benefit

from a six-week program over a 10-week program," said Powers.

Mueller also feels the program is worth trying again.

"I really liked it," she said.

"It was easier to handle the students' problems, but those involved had to be ready to get their work done."

Powers said the program is on the calendar for next summer.

"All individual department chairs will have to decide if they feel it should be offered. We'll also have to compare our results with those at the Ankeny Campus," Powers said.

At this time, Kriss Philips, dean, Boone Campus, also assumes the program will be offered.

"I never looked for the six-week session to be a large program, but I'm afraid we didn't promote it as well as we could have promoted it last year," said Philips.

Like Powers and Mueller, Philips sees the program has its place here.

Philips doesn't feel the program is for everyone.

"The six-week session appears easy, but it takes a really dedicated student," he said.

As it looks now, students can plan on participating in a six-week session next summer at Boone Campus. Class offerings will be determined at a later date.

Cheerleaders provide support for teams

by TRACEY HERRICK
Staff Writer

Two-four-six-eight, who do we appreciate?

These words, accompanied by a routine of leaps and flips, are chanted by none other than the Boone Campus cheer squad.

These hard-working girls include the following students: Captain Stephanie Lange, Julie Anderson, Angie Trotter, Karin Clinkenbeard, Karon Gardner, Carla Stumbo, alternate Julie Cunningham and D. Macc Bear (the mascot) who wishes to remain anonymous.

Jinny Silberhorn, faculty advisor, is excited about this year's squad and calls it "the strongest group in years."

The fact there are no returning cheerleaders makes this year especially challenging for Silberhorn and the squad.

Lange says, "When coming up with new cheers, we use a

combination of cheers from our old schools."

The cheerleaders certainly do their part at the basketball games, often being the only support during games on the road.

However, the emphasis for the squad is not necessarily on cheerleading, according to Silberhorn.

The squad is a very active social service group also. Among their activities are an annual bake sale, a cheerleading clinic for the grade schools, conducting a hoop shoot during half-time of home games and holding an auction of donated items at Christmas time.

For the players, the squad packs a sack lunch for the men's and women's teams for one away game per season.

The cheerleaders were able to purchase new uniforms this year. Funding came from auction profits, the clinic and student activity fees.

collegiate camouflage

Y	G	O	L	O	P	Y	T	Y	G	O	L	O	E	G
G	O	L	O	Z	T	Y	G	O	L	O	R	T	S	A
O	T	O	L	O	E	T	L	O	S	Y	H	P	G	S
Y	G	O	L	O	C	E	O	O	L	G	Y	G	Y	T
G	Y	G	Y	L	H	A	C	P	H	O	G	G	R	P
O	N	G	G	O	N	I	Y	G	O	L	O	I	T	E
L	Y	G	O	L	O	I	D	A	R	L	L	Z	O	N
O	G	Y	L	L	L	G	Y	G	O	L	O	T	N	O
Y	Y	G	O	L	O	M	S	I	E	S	I	G	E	L
R	G	G	L	S	G	D	S	L	O	I	B	Y	Y	O
B	Y	O	I	P	Y	Y	O	R	O	L	O	G	Y	G
M	G	L	H	E	H	Z	O	H	D	A	R	O	G	Y
E	C	O	P	P	M	M	I	R	T	O	C	N	O	H
G	Y	G	O	L	O	T	P	Y	G	E	I	S	L	P
O	G	Y	Y	G	O	L	O	N	U	M	M	I	O	P

Can you find the hidden LOGY's?

- | | |
|--------------|------------|
| ASTROLOGY | PENOLOGY |
| ECOLOGY | PHILOLOGY |
| EGYPTOLOGY | PHYSIOLOGY |
| EMBRYOLOGY | RADIOLOGY |
| ETIOLOGY | SEISMOLOGY |
| GEOLOGY | SOCIOLOGY |
| IMMUNOLOGY | TECHNOLOGY |
| METHODOLOGY | TOPOLOGY |
| MICROBIOLOGY | TYPOLOGY |
| ONTOLOGY | ZOOLOGY |
| OROLOGY | |

BILDEN'S

SAV-MOR Drug

Serving Midwest Families For A Century

Phone 432-1304

804 Story St.

Boone

"We support the BEARS"

Bob Ray and the
ask you to join



**GREAT AMERICAN
SMOKEOUT**

TAKE A BREATHER

NOVEMBER 17, 1988

Teacher Feature

by LISA MILLER
Staff Writer

Brenda Hoshaw, the subject of this month's Teacher Feature, was attracted to DMACC-Boone Campus because she likes small town life.

Hoshaw, a nursing instructor, teaches nursing theory and first year practicum this semester.

Hoshaw is chair of coordinating curriculum and is also a member of the curriculum committee.

After graduating from high school in her home town of Stratford, she attended Grand View College in Des Moines, nursed for four years and left nursing for the challenge of teaching.

Hoshaw enjoys DMACC because she thinks it's a "positive place to work."

Having summers off provides another plus.

DMACC is an "easy commute" from Stratford where she lives with her husband, Randy. In her free time, Hoshaw is very active. She loves basketball, slowpitch softball and downhill skiing. She also enjoys refinishing antiques.

Hoshaw's decision to nurse was made because of the flexibilities and the vast field of opportunities. She is currently attending Drake University for her master's degree.



BRENDA HOSHAW

NEWS BRIEFS

Election news

DMACC-Boone Campus will be involved in the voting process on Election Day, Tuesday, Nov. 8, as the gymnasium will be the site of an official voting place, according to Al Sorensen, Boone County commissioner of elections.

Voters from Boone's 2nd Precinct will vote Nov. 8 from 7 a.m. to 9 p.m. at the Boone Campus gym. Four voting machines will be set up in the gym entrance.

Deadlines for voter registration are Monday, Oct. 24 for mail-in entries and Saturday, Oct. 29 for registering in person, Sorensen said.

Open gym

Open gym at the DMACC-Boone Campus gymnasium will be held every Tuesday, Thursday and Sunday evening from 7 to 9 p.m., according to Sabra Borich, intramurals coordinator.

"Also, watch for more intramural activities to be held Sunday evenings. Announcements and signup posters will be posted on the wall near the Campus Center," she added.

Don't miss the campus play!

The Boone Campus drama department is presenting "Nurse Jane Goes to Hawaii" in two performances Friday and Saturday, Oct. 21-22 at 7:30 p.m. each evening in the auditorium.

Show your school spirit by attending one of these performances!

A special treat includes pie, coffee and punch served afterwards in The Student Center.

Library conducts book sale

The Boone Campus Library recently conducted a book sale with approximately 200-250 books being sold.

The money generated from the sale is put back into a fund to replace old and outdated books.

It is not known when the next sale will be, since sales are only held when a stockup of older books needs to be sold and the shelves need updating, according to library personnel.

Hours you should know

For your convenience, important hours of various areas on campus are listed below.

The Learning Center hours are: Monday - Thursday, 8 a.m. to 8 p.m.; Friday, 8 a.m. to 3 p.m.

The library hours are: Monday through Thursday, 7:30 a.m. to 8:30 p.m.; Friday, 7:30 a.m. to 4 p.m.

The bookstore hours are: Monday through Friday, 8 a.m. to 12:30 p.m. and 1 to 4:30 p.m.

Main office hours are: Monday through Friday, 8 a.m. to 4:30 p.m.

Bookstore conducts sale

The Boone Campus Bookstore is currently offering 20% off all sweatshirts, according to Doris Wickman, manager.

You may also want to check out the assortment of Halloween masks now in stock.

Singers welcome!

All students, faculty and staff are welcome to join the Boone Campus Singers!

There is no fee, no auditions are required and no credit is earned.

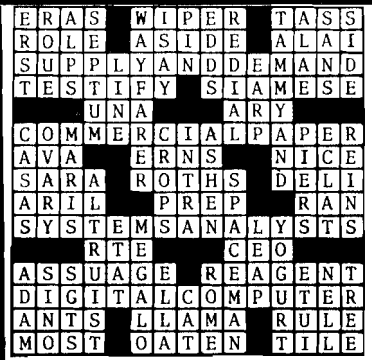
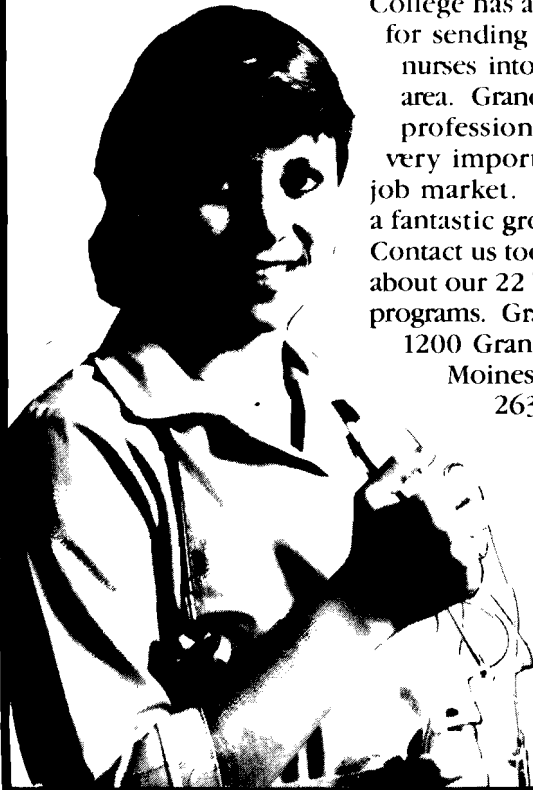
The group meets Tuesday and Thursday from 12:50 to 1:20 p.m. in Room 116.

"We sing for fun," Mr. Loos, music instructor, commented.

Grand View COLLEGE

Junior Lisa Schiefer is shaping her nursing future at Grand View College. She believes, "Grand View

College has a great reputation for sending highly-qualified nurses into the Des Moines area. Grand View encourages professionalism, which is very important in today's job market. The faculty is a fantastic group of teachers." Contact us today to learn more about our 22 bachelor's degree programs. Grand View College, 1200 Grandview Ave., Des Moines, Iowa. Call 263-2800.



Pork fritter Basket \$2⁴⁹
Jumbo pork fritter Basket \$2⁹⁹
 (Lettuce and tomato 15¢ extra)

Strawberry Shortcake
 \$1²⁹



Offers good Oct. 19 thru Oct. 25, 1988

Call ahead 432-6645 South Story St.

